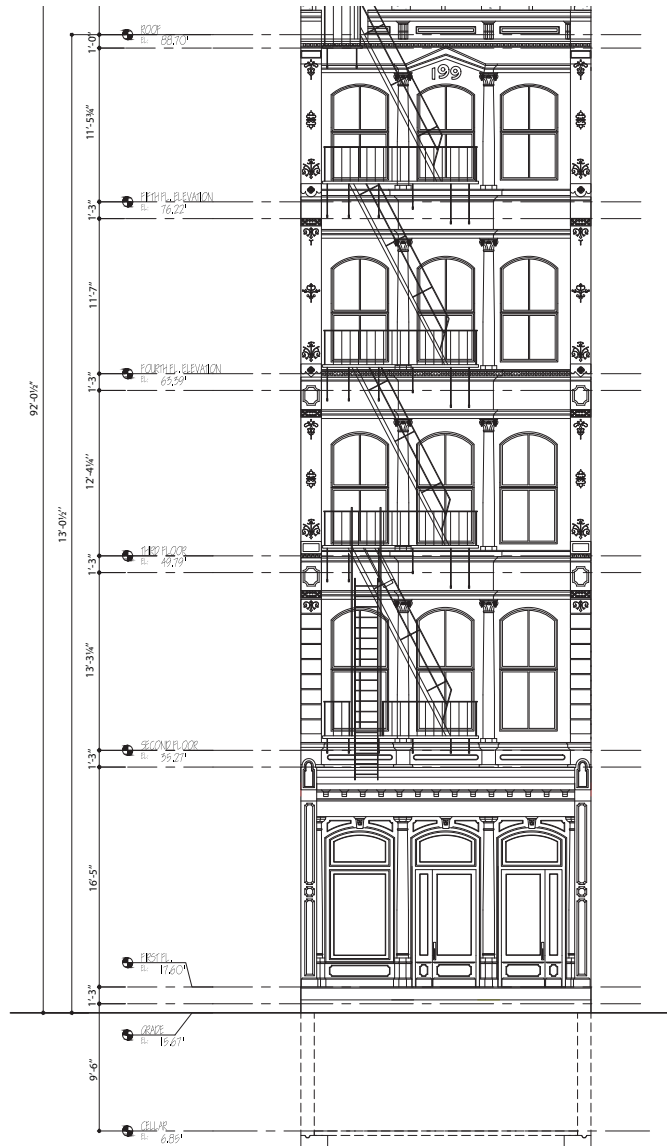


## Available: 293 Church Street

Area: 1600 sf aprox.  
+1400 sft basement

rent is \$12,000 per month



## Features

Approximately 1600 sf retail Ground floor and approximately 1400 sf Lower Level.

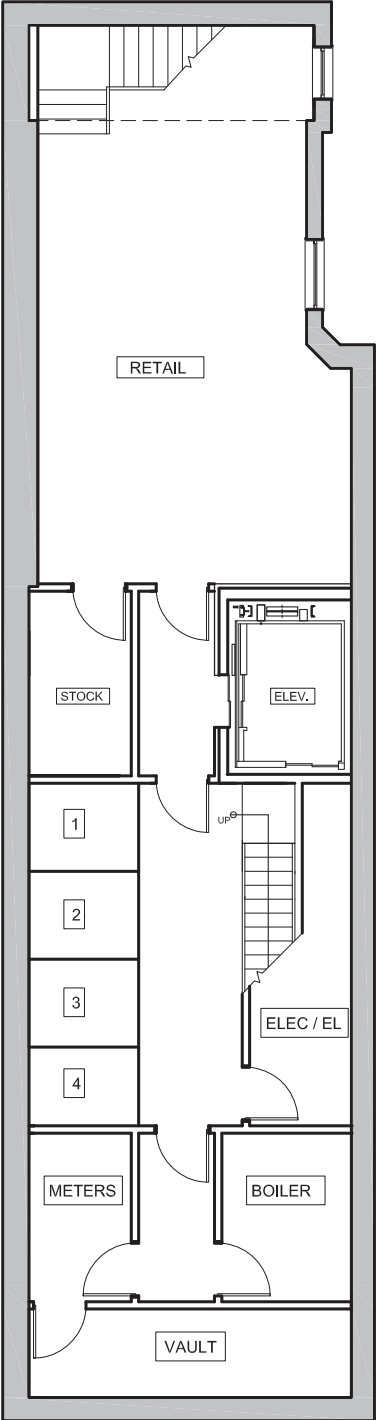
17' high ceiling, skylight.

Brand new storefront and HVAC

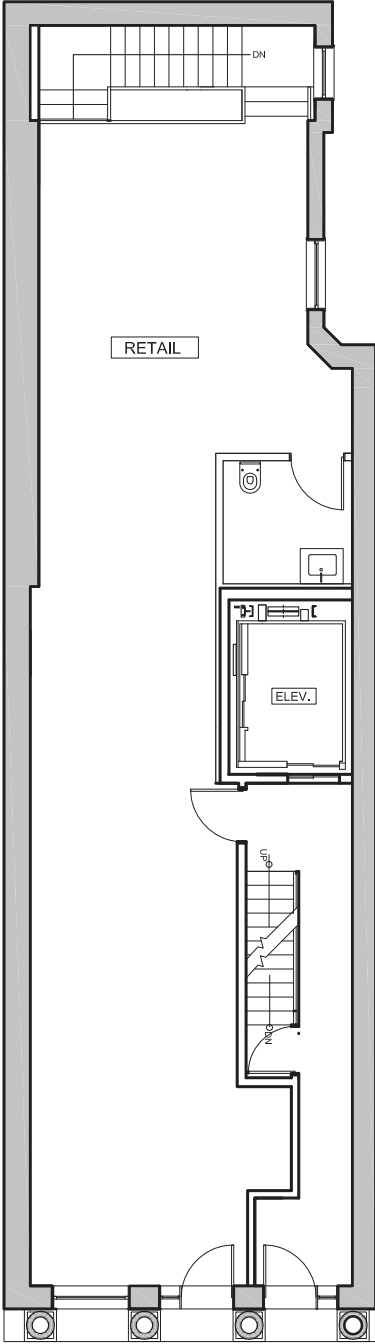
**2 blocks from Canal Street and the heart of Soho. Terrific foot and vehicular traffic!!! Will vent if needed.**

**Neighbors: James Perce, Anejo, Antique Garage, Baked, La Colombe, Tribeca Grand Hotel among mane more!**

# Floor plans



1 CELLAR RETAIL PLAN NTS



2 GROUND FLOOR RETAIL PLAN NTS

