

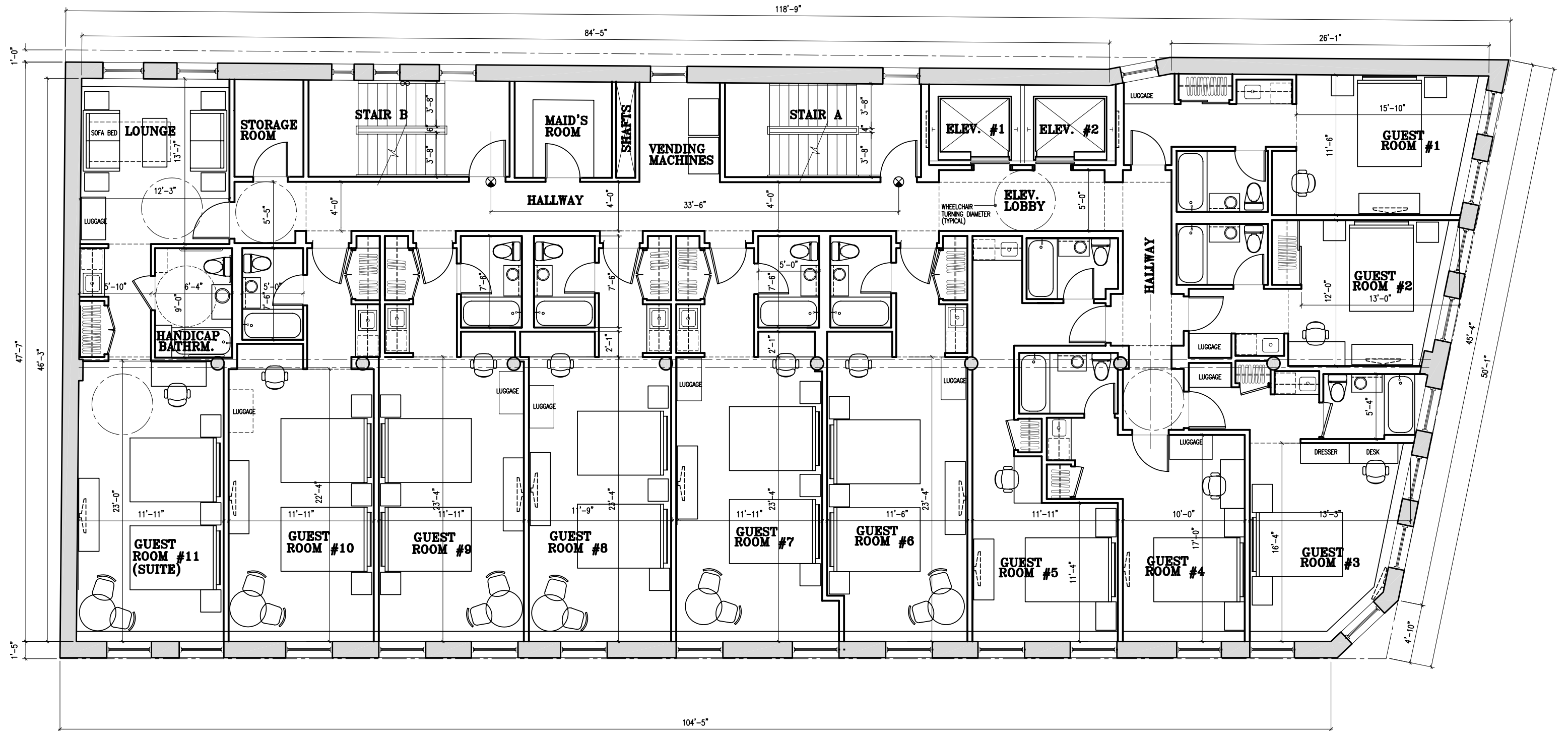
Scheme # 1 (11 Rooms)

Typical Floor Plan (2nd thru 6th)

SCALE 1/8"=1'-0"

Proposed Hotel
178 Mott/ 368-370 Broome Street
NEW YORK CITY

ISRAEL PELES ARCHITECTS PC



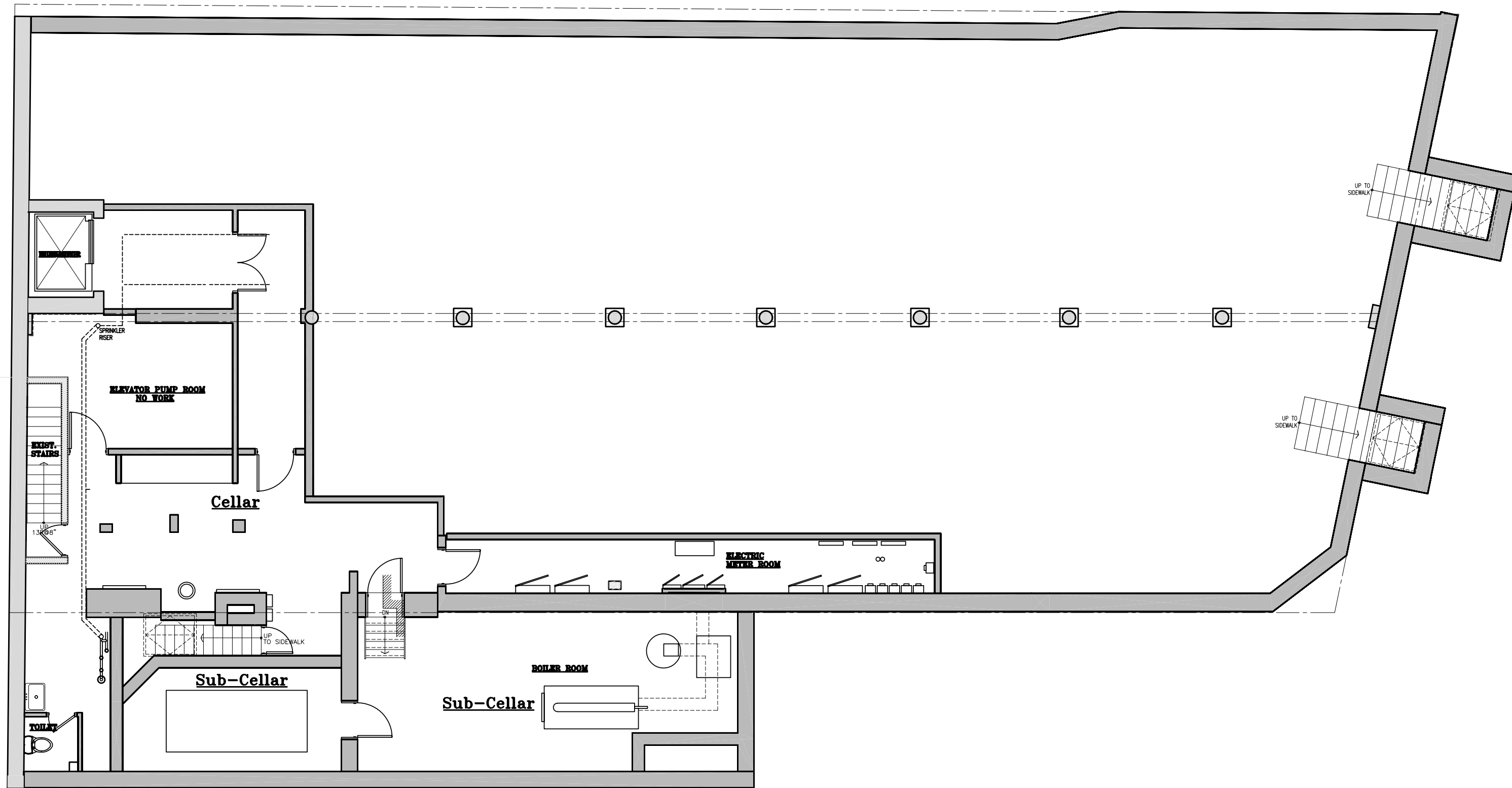
Scheme # 2 (11 Rooms)

Typical Floor Plan (2nd thru 6th)

SCALE 1/8"=1'-0"

Proposed Hotel
178 Mott/ 368-370 Broome Street
NEW YORK CITY

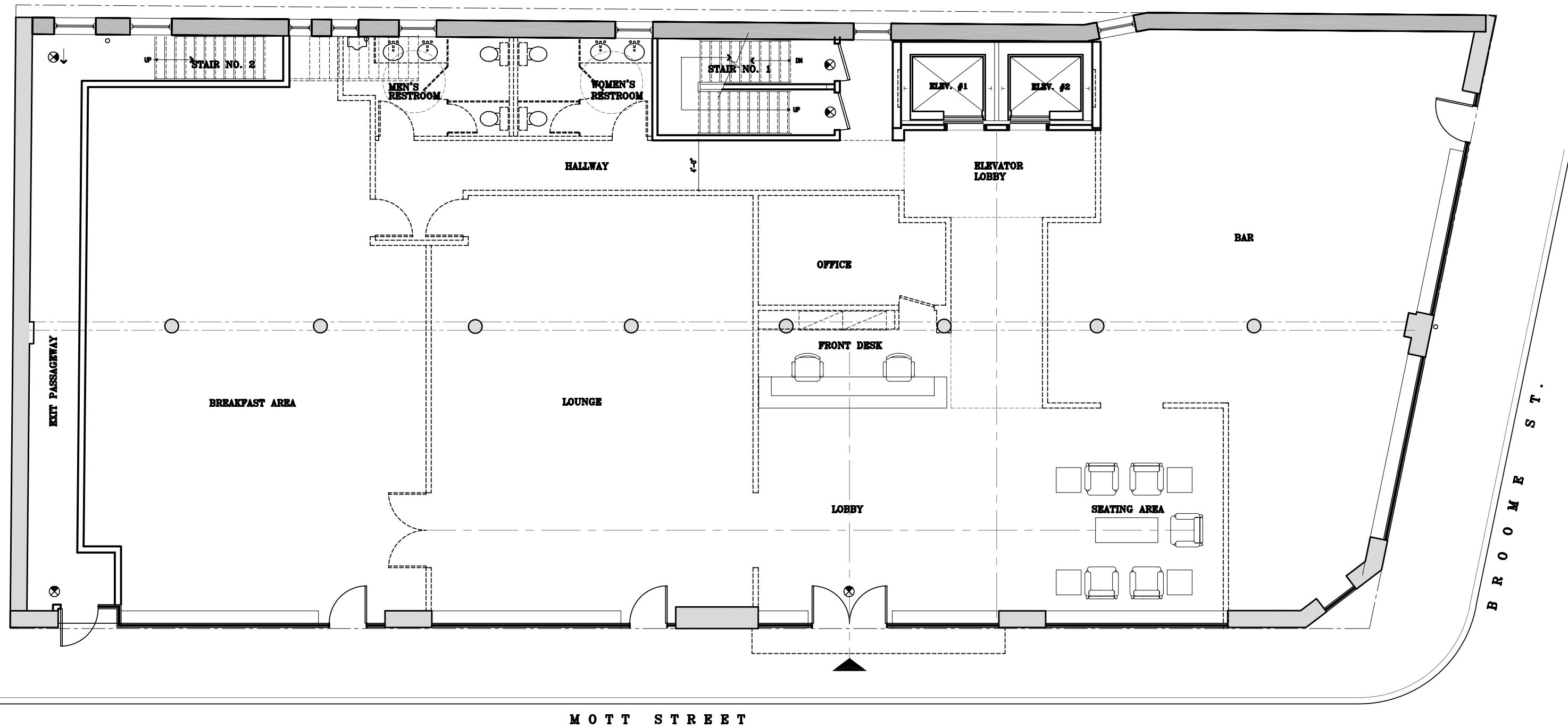
ISRAEL PELES ARCHITECTS PC



Existing Cellar Floor Plan
 SCALE 1/8"=1'-0"

Proposed Hotel
178 Mott/ 368-370 Broome Street
 NEW YORK CITY

ISRAEL PELES ARCHITECTS PC

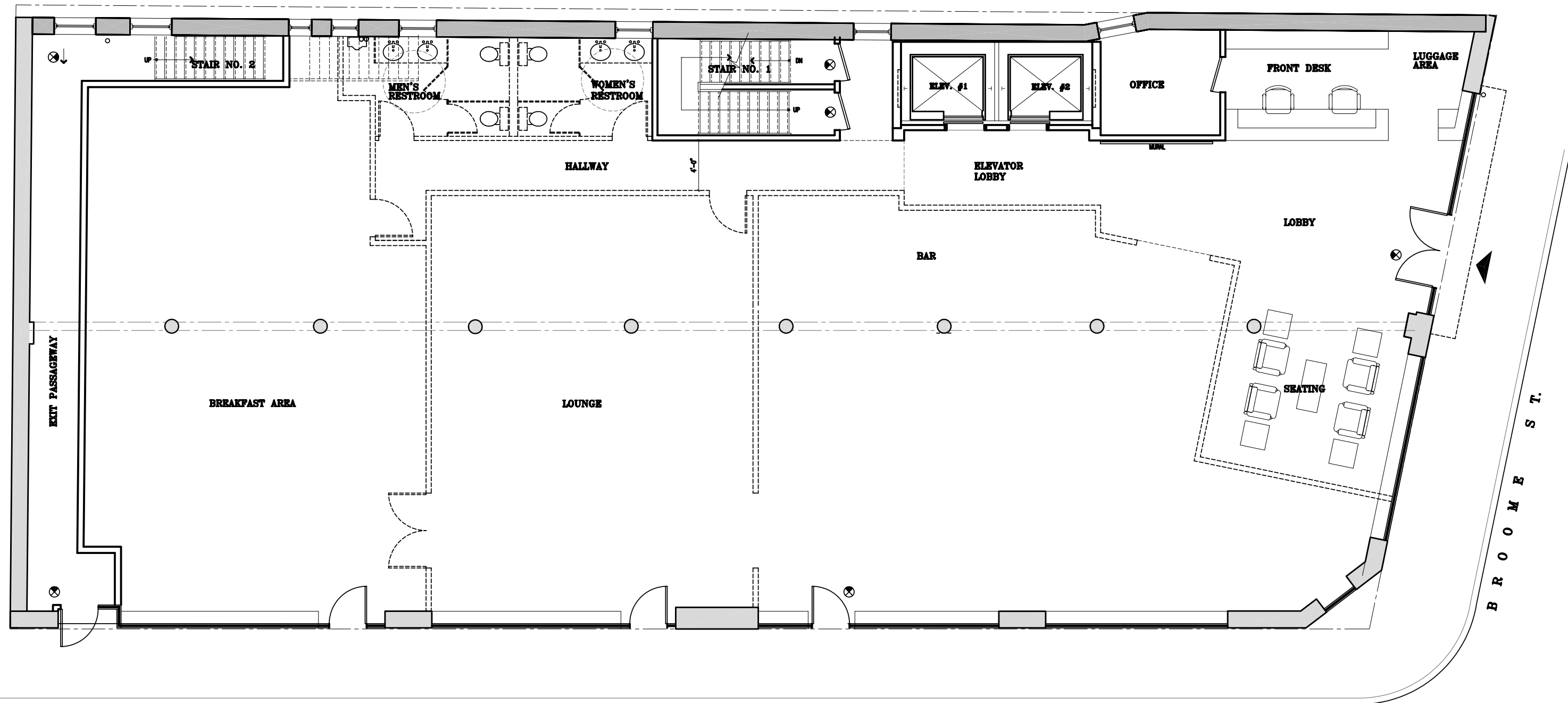


First Floor Plan- Option 1

SCALE 1/8"=1'-0"

178 Mott/ 368-370 Broome Street
NEW YORK CITY

ISRAEL PELES ARCHITECTS PC



First Floor Plan- Option 2

SCALE 1/8"=1'-0"

178 Mott/ 368-370 Broome Street
NEW YORK CITY

ISRAEL PELES ARCHITECTS PC



1 Existing Elevation At Mott Street
SCALE 1/16"=1'-0"