

# 35-02 Northern Blvd, Long Island City, NY 11101

13,200SFT Turn Key Auto Center



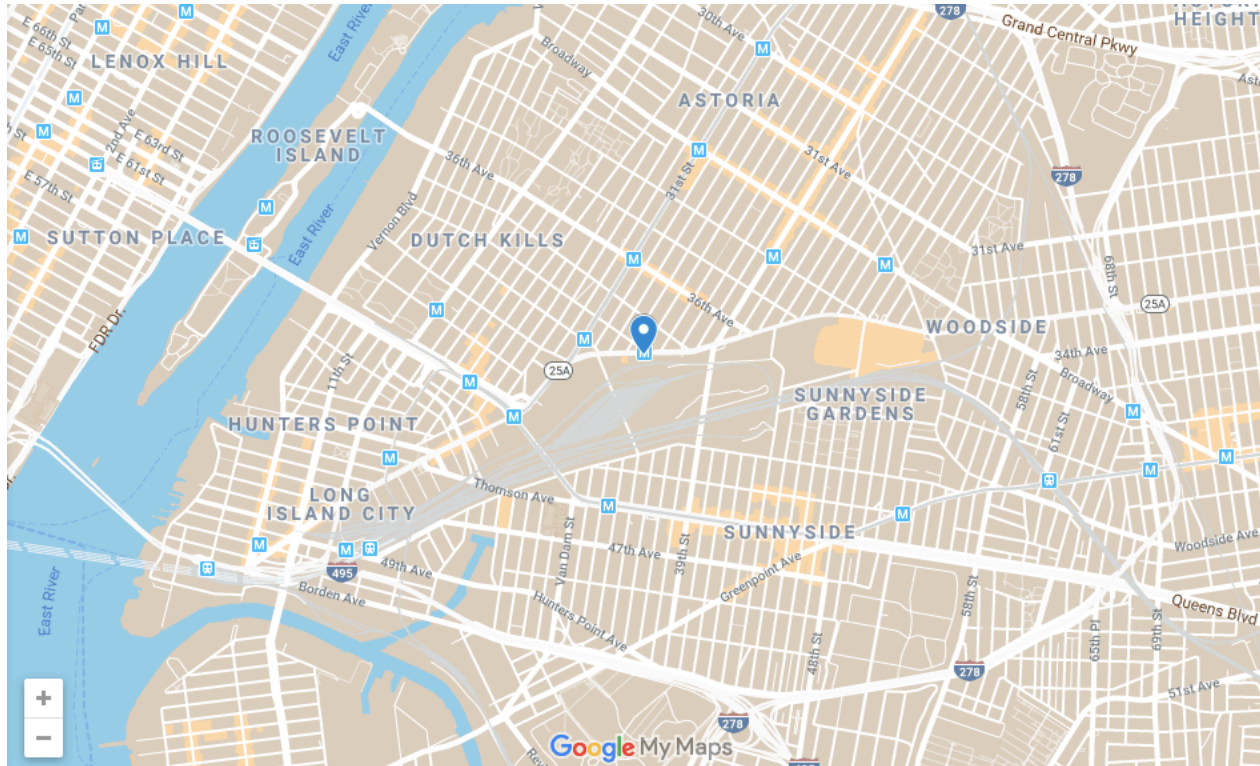
# 35-02 Northern Blvd, Long Island City, NY 11101

## 13,200SFT Turn Key Auto Center

<b>Owner:</b>	Chin Family							
<b>Year Built:</b>	1930							
<b>Building Height:</b>	2 Floors							
<b>Building Size:</b>	41,464 Square Feet							
<b>Available:</b>	Floor	RSF	<b>Asking [PSF]</b>	<b>Yearly Rent</b>	<b>Monthly Rent</b>	<b>Possession</b>	<b>Term</b>	<b>Lease Type</b>
	Ground	13,200	\$35.00	\$462,00.00	\$38,500.00	Arranged	Negotiable	Direct
<b>Additional Information:</b>	<ul style="list-style-type: none"><li>• Turn Key Auto Center perfect for Dealership or Service Center</li><li>• Currently built as Kia Dealership, with work performed as recently as 2017</li><li>• 7 existing lifts in place</li><li>• Existing sales offices</li><li>• 150 Feet from 36<sup>th</sup> Street N and R train station</li><li>• Strong automobile co-tenancy with every major auto brand along Northern Boulevard</li></ul>							

# 35-02 Northern Blvd, Long Island City, NY 11101

**13,200SFT Turn Key Auto Center**



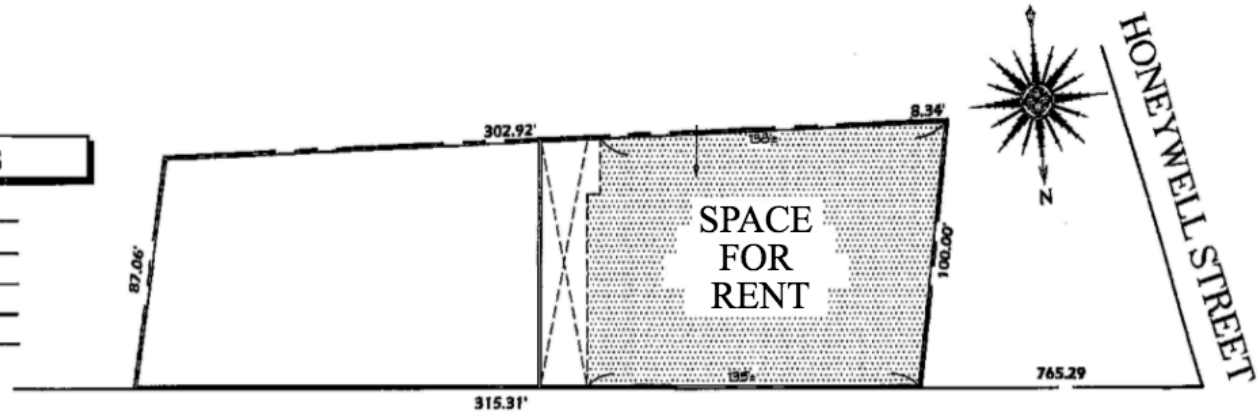
**MILSMITH**  
REAL ESTATE ADVISORY SERVICES

# 35-02 Northern Blvd, Long Island City, NY 11101

13,200SFT Turn Key Auto Center

## PLOT PLAN nts

BLOCK	214
LOT	251
ZONE	M1-5
MAP	9b
CB*	401



NORTHERN BOULEVARD

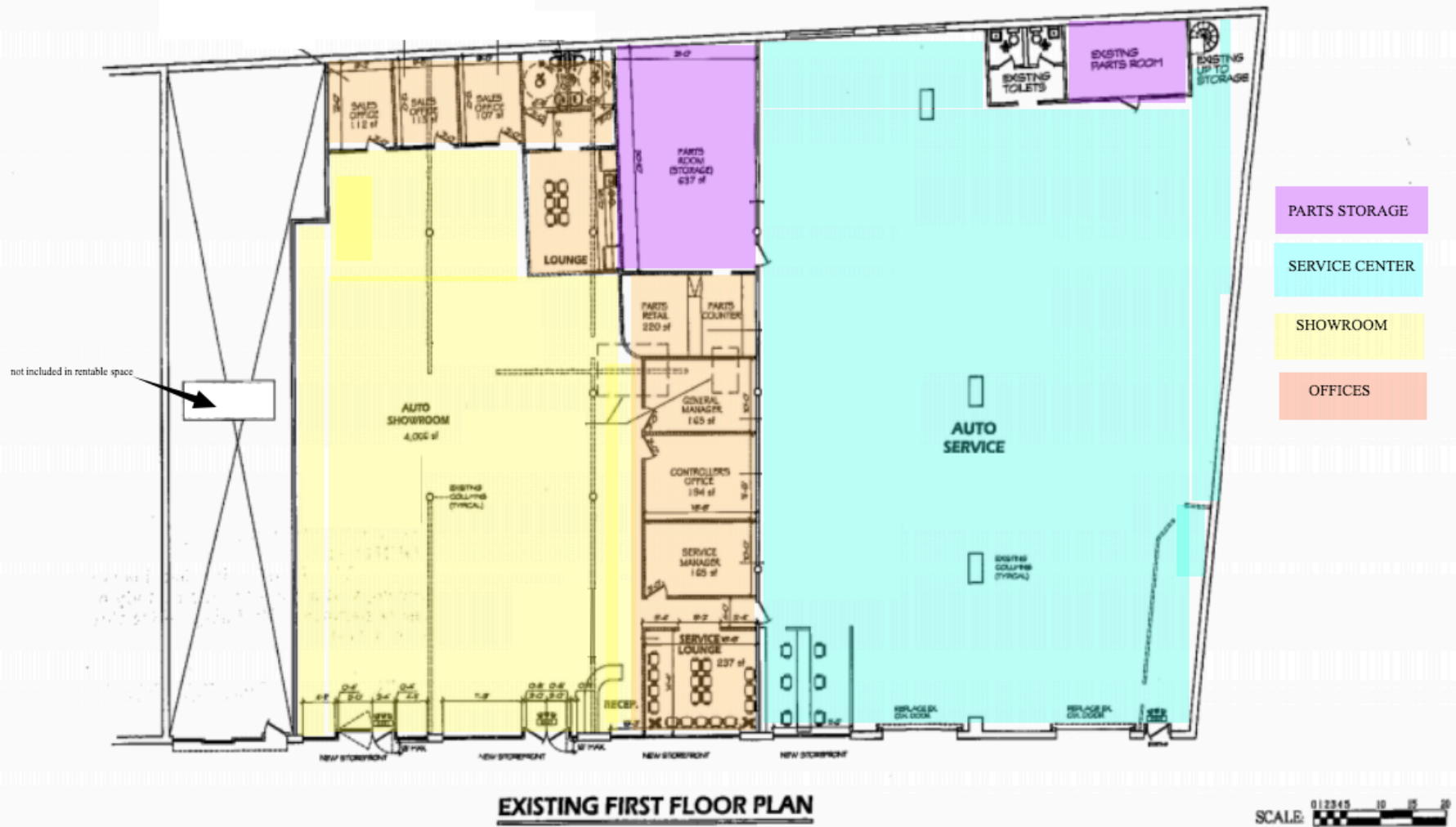


NORTHERN BOULEVARD ELEVATION

SCALE: 0 1 2 3 4 5 10 15 20

# 35-02 Northern Blvd, Long Island City, NY 11101

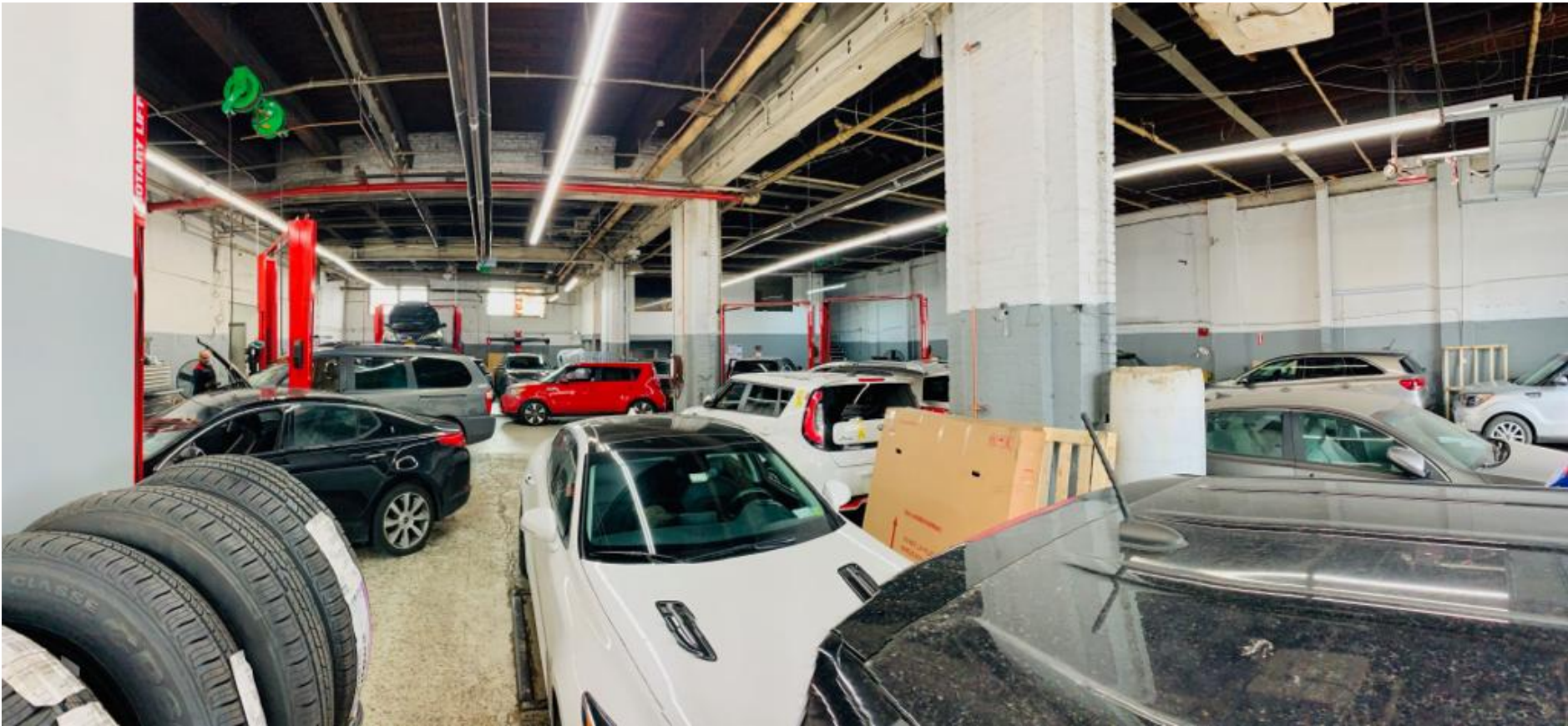
## 13,200SFT Turn Key Auto Center





# 35-02 Northern Blvd, Long Island City, NY 11101

**13,200SFT Turn Key Auto Center**



# 35-02 Northern Blvd, Long Island City, NY 11101

## 13,200SFT Turn Key Auto Center



# 35-02 Northern Blvd, Long Island City, NY 11101

**13,200SFT Turn Key Auto Center**



TO LEARN MORE CALL  
JOSHUA SMITH AT 646 705 1060  
OR  
MATT MUMMERT AT 765 376 9467  
OR VISIT  
[MILSMITH.COM/LIC](http://MILSMITH.COM/LIC)